

MARK YOUR CALENDAR

COOPERATIVE INSTITUTE FOR CLIMATE AND SATELLITES - NC SUMMER INSTITUTE ON CLIMATE CHANGE

JUNE 15 - JULY 1, 2011 • ASHEVILLE, NC, USA



TURNING ADAPTATION INTO ACTION *Define Your Strategic Advantage*

In an era of rising global competition, immense technological innovation and widespread economic uncertainty, society faces another challenge —tackling the realities of climate change.

Historically, societies and ecosystems have adapted to climate variability. There is an increased need for focusing on adaptation now as the pace and impacts of climate change are occurring outside the range of past experiences. Societies must learn to adapt. But how?

The profound implications of climate change underscore that scientists and decision-makers, together, must develop proactive measures and evaluate options for adaptation.

The scientific and academic communities are committed to bringing new information and knowledge to the forefront.

Policy makers and the regulatory community are striving to devise practicable frameworks to mitigate adverse climate change.

CEOs are redefining value and are eager to see sustainability permeate from corporate strategy into various elements of operations.



The way forward requires education and partnerships

To build adaptation capacity, the Cooperative Institute for Climate and Satellites—North Carolina (CICS-NC) is launching a uniquely tailored series, the **Summer Institute on Climate Change (SIC2)**, that provides science and services to establish an informed society capable of anticipating and responding to climate change and its impacts.



The broader vision and goals of the Summer Institute are to:

- Establish an on-going collaborative networking forum on climate change
- Develop comprehensive, interdisciplinary and cross-sector strategies to capitalize on opportunities surrounding the impacts of climate change
- Promote a climate-resilient and climate-literate society that is able to make informed decisions, using the latest information, to maximize social, economic and environmental benefits

SIC2 2011 is the first in a series of annual programs focused on Adaptation.

Program Structure

The Summer Institute 2011 is built around a combination of keynote lectures, team exercises, and specialized workshops aimed at tackling several aspects of adaptation to climate change. These activities will build skills to develop proactive measures and evaluation options for adaptation. Activities are designed to close the gap between climate change science and decision making.

The cost for participants is estimated at approximately \$3500. A number of fellowships is being provided by NOAA's National Climatic Data Center. Please refer to the web site for additional information on scholarships and criteria.

The Summer Institute will take place at the UNC Asheville campus, where participants will be provided basic accommodations at the campus dormitories. Transportation from the Asheville Airport to the UNC Asheville campus and to all major team building events will be provided. Meals will be provided at the University campus cafeteria. To foster team-building, participants are encouraged to select UNC Asheville for housing but are welcome to select other accommodations at their own responsibility.

Application Process

Please read the detailed application instruction and requirements on the Summer Institute's Web site:

<http://si.cicsnc.org>.

Application Deadline:

Friday, March 11, 2011

CICS-NC

Directed by Dr. Otis Brown, CICS-NC is an Inter-Institutional Research Institute of the UNC System. Affiliated with NOAA's National Climatic Data Center in Asheville, NC, it is supported by a cooperative agreement between NOAA, North Carolina State University, and the University of Maryland.



NC STATE UNIVERSITY

NOAA's National Climatic Data Center
Asheville, North Carolina

2011 SPECIFIC OBJECTIVES AND EXPECTED OUTCOMES

Demonstrate the relevance of adaptation in:

- Education and operating models of various professions
- Interdisciplinary approaches that analyze vulnerability to climate change in key sectors
- Integrated assessments of possible adaptation measures
- Development of quantitative indicators of vulnerability and resilience
- Strategies that meet future needs of decision makers
- Tracking and monitoring of necessary financial expenditures towards adaptation to climate change

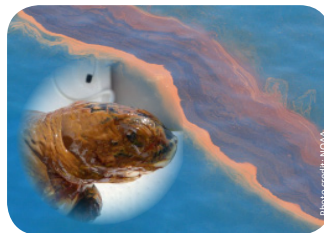
Establish a knowledge exchange forum to share practical experiences in adaptation, including:

- Current progress made by communities, states and industry in various areas (e.g., adaptive coastal management, disaster prevention and mitigation, water resource management, etc.)
- Growing a strong network that will inspire partnerships, exchange experiences and identify opportunities for collaboration

WHO SHOULD APPLY

Vulnerability to climate variability and change varies greatly across geographies and sectors. So who should attend this institute?

- Anyone with interest in climate change adaptation and how to establish a competitive advantage. Professionals, policy makers, regulators, investors, executives, directors, leaders, and consultants are all welcome.
- Individuals with academic or professional background in disciplines



relevant to the Summer Institute's theme— fields of study may include, but are not limited to: civil and environmental engineering, finance and operations, hydrology and water resources, statistics, political science, ecology, biogeochemistry, hydro-climatology, irrigated agriculture, environmental legislation, environmental policy, landscape architecture, resource economics, sociology, infrastructure construction and design, urban planning and public health.

Asheville is ideally suited as a venue for a discussion on climate. Home to NOAA's National Climatic Data Center and a strong cohort of academic, non-profit, and corporate climate and environmental initiatives, Asheville is increasingly recognized as a focal point for climate expertise. Situated along the scenic Blue Ridge Parkway, the area is also noted for its abundant natural beauty, outdoor activities, and vibrant cultural community.



For questions, please contact: Jenny Dissen, SIC2 Director
jennydissen@cicsnc.org • +1 828 257 3135
<http://si.cicsnc.org>